

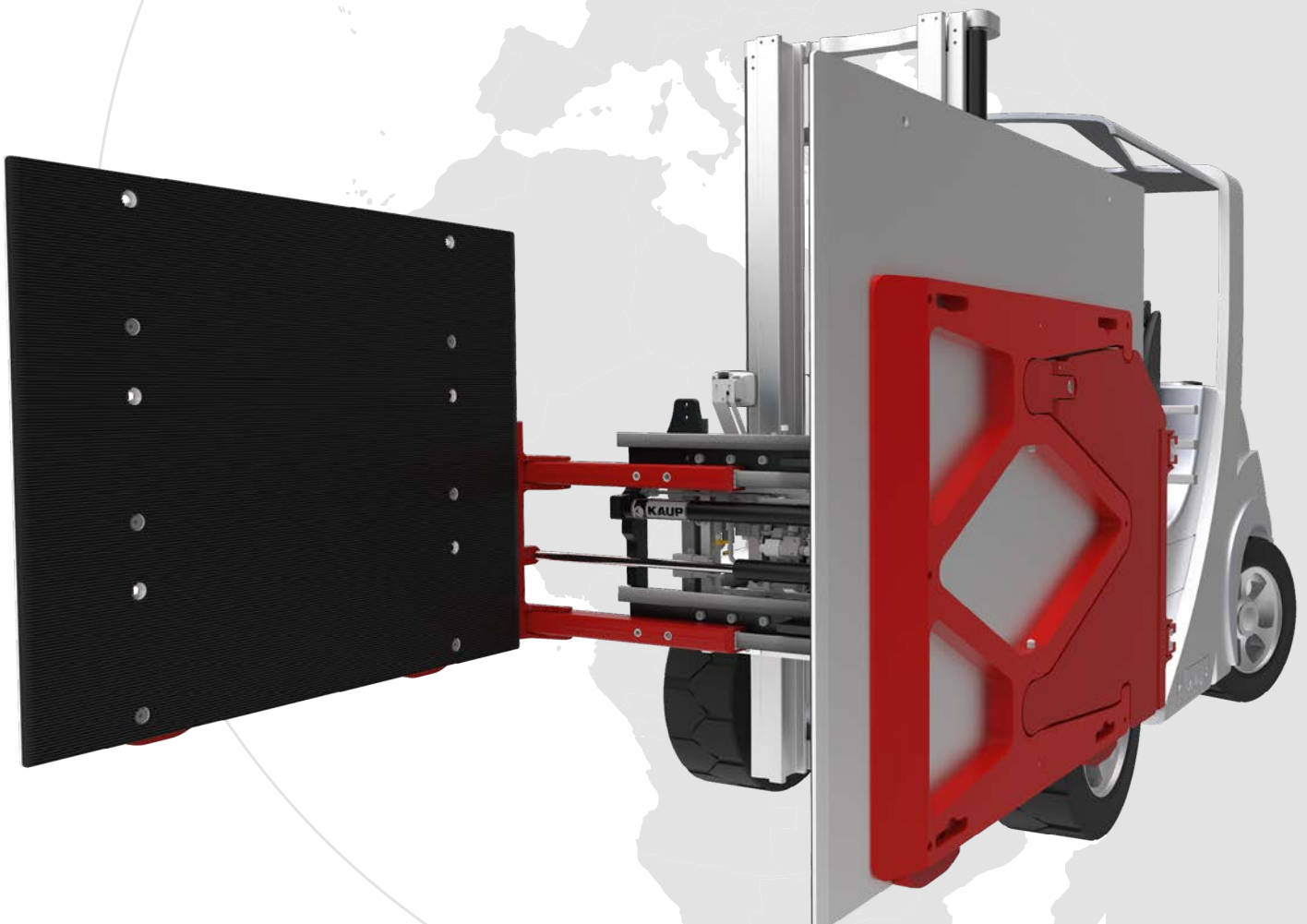


Helping hands for your forklift truck

Appliance- and Carton Clamps

T413G · T414

SLC
2.0

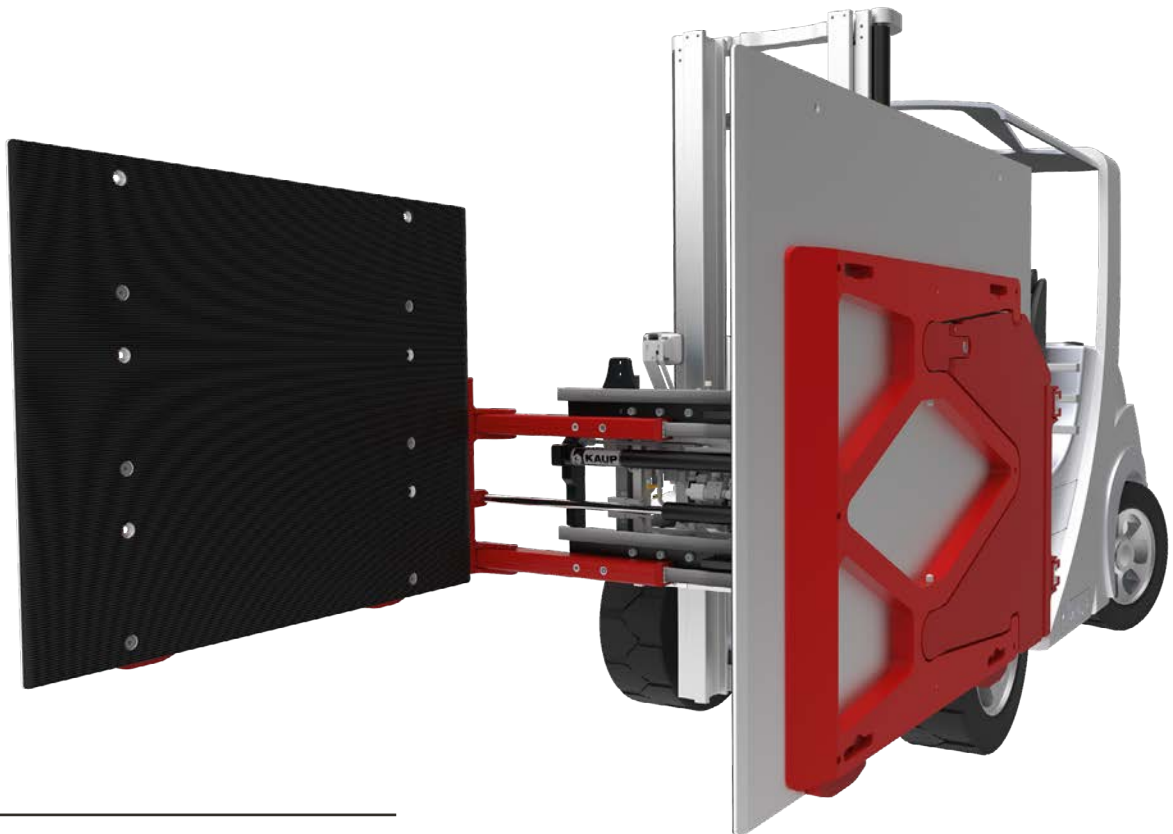




The KAUP **Appliance- and Carton Clamps T413G · T414** set global standards in terms of efficiency and durability in the palletless transport of white goods (refrigerators, washing machines, etc.) and brown goods (consumer electronics). Whether one or up to sixteen units: KAUP always has a suitable Appliance / Carton Clamp!

Thanks to continuous optimizations, the **Appliance- and Carton Clamps T413G · T414** offer a technically sophisticated solution for demanding material handling. Specially designed pressure frames and pressure plates ensure even force distribution and protect the load. High-quality fixed piping replaces flexible hoses and increases operational safety. Optional, individual adjustment options for preload and tilt enable precise adjustment to specific operating conditions and loads. And as an absolute novelty: the load-dependent clamp force control 'Smart Load Control'.





Innovations of T414B-1

01

Pressure plates

Aluminum pressure plates with vulcanized abrasion-resistant grooved profile rubber - 180° rotation

02

Adjustment

Toe-in & camber are not preset, but individually adjustable (as option)

03

Clamp arms

Optimized arm support and torsion resistant pressure frame.

04

Profile

Low service, glide-optimized synthetic sliding profiles for energy-saving long operating times

05

Wear & tear

Exchangeable, high strength wear and tear pads in different heights on the lower side of the arms.

06

Hydraulic

Optimized hydraulic system for significantly higher opening and closing speeds



KAUP revolutionizes material handling with Appliance-/Carton Clamps T413G · T414 and has designed, especially for these, an intelligent and autonomous system. The so called **‘Smart Load Control’** (SLC) system regulates, as the only one on the market, the clamping force on Appliance-/Carton Clamps exclusively load dependent and not load pattern dependent. **‘Smart Load Control’** is therefore based on the weight applied when flexibly defining the clamping force and not on the dimensions of the load. The aim of the system is to ensure that only as much clamping force as really necessary acts on the load – completely without any intervention of the forklift truck driver – and minimising damage to the goods. SLC functions without intervention in the forklift hydraulic system. It only requires a power supply **‘Plug and Play’**. **‘Smart Load Control 2.0’** is the second, optimised generation of the system, which works just as quickly as conventional Appliance-/Carton Clamps.



Advantages

01

Autonomic

‘Smart Load Control’ is an autonomic system – combinable with other KAUP clamps. These attachments are: ‘SLC ready’.



02

Monitoring

Monitoring, Recording and Reportable control of the transported loading pattern and clamping pattern (optional).



03

Conform

SLC functions without intervention in the forklift hydraulics - the CE-Compliance in acc. with EU-Machinery Directive is legally guaranteed.



Function

01

Clamping

Clamping arms move together and begin to clamp the load with a minimum pressure.

02

Pressure

The lifting movement generates an automatic pressure adjustment until the load is lifted freely.

03

Handling

Lifting, clamping and transportation of the load with optimal clamping pressure – never more than absolutely necessary.



Different variants for various applications

Every **Appliance- and Carton Clamp T413G · T414** can be equipped and upgraded for individual use: from a basic device with fixed set pressure to the all-in version with autonomous load-dependent clamp force control - ‚Smart Load Control‘ – as well as adjustable toe-in & camber.

01

Basic: Clamp with single pressure setting

The clamping force is pre-defined according to the application and adjusted. The attachment always operates with the same pre-set clamping pressure, which is based on the heaviest load to be transported.

However, there is a risk of load damage when transporting lighter and more sensitive goods.

Features:

- Manometer gauge for monitoring the operating pressure
- Adjustable pressure relief valve
- Fixed setting to pre-defined pressure
- Optional with hand wheel to change the pressure

02

Comfort: Clamp with manual pressure selection

More protection against load damage is provided by manual pressure switching. The clamping pressure can be selected mechanically from three or four pressure levels defined specifically for the application. The attachment always operates at the selected clamping pressure and does not prevent incorrect operation by the forklift truck driver.

Features:

- Pressure gauge for monitoring the operating pressure
- Adjustable pressure relief valve for 3 or 4 selectable pressure stages
- Operation by manual / electrical control as option
- Optional with optical display for selected pressure range



Upgrade: Clamp with automatic pressure selection

03

The required pressures are pre-defined, selected and assigned to various

load patterns. The system independently identifies differing load patterns and automatically sets the required clamping pressure. This system prevents incorrect operation by the forklift truck driver, but is based on the dimensions and not the weight of the load.

Features:

- Light barrier
- Reflecting light switch
- Programmable Logic Control (PLC)

All-in: Clamp with 'Smart Load Control' 2.0 (SLC)

04

The required pressures are always adjusted autonomously depending on the load. SLC rules out incorrect operation by the forklift driver and reduces damage to a previously unimaginable minimum.

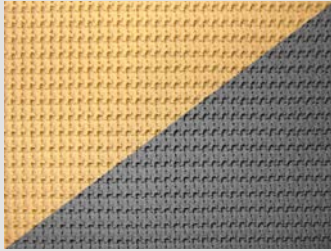
Features:

- Patented autonomic working SLC unit
- Aluminum pressure plates with vulcanized grooved profile rubber (RPG)
- Setting the load capacity range via display
- Display for monitoring and reporting as option
- Sensors for recording further parameters as option



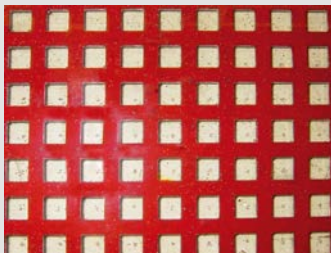
Contact pad coatings

Every **Appliance-** and **Carton Clamp T413G · T414** can be fitted for each individual operation with the optimal contact pad coating.



Gripping nap strap coating

the yellow coating is very soft, leaves no marks on the load and distinguishes itself through excellent friction. The black coating has low wear and tear qualities.



Secutex lining

is made of Polyurethane cast around a metal grid. It is screwed onto the contact pads and can be exchanged easily if necessary. It distinguishes itself through excellent friction and durability.



Grooved profile rubber (RPG)

The vulcanized grooved profile rubber on the aluminum pressure plates is characterized by high abrasion resistance. Due to the very good adhesion and adaptation to the load surface a lower clamping pressure is required. Grooved profile rubber is only available on screw-on aluminum pressure plates and is standard for clamps with Smart Load Control.



Helping hands for your Forklift truck

KAUP GmbH & Co. KG
 Braunstrasse 17 · D - 63741 Aschaffenburg
 ☎ +49 6021 865-0 · 📠 +49 6021 865-213
 ✉ zentrale@kaup.de · 🌐 www.kaup.de

KAUP attachments correspond to the requirements of the valid EC regulations regarding quality, safety and technical documentation. All technical data are subject to alteration. KAUP is certified acc. to DIN EN ISO 9001

